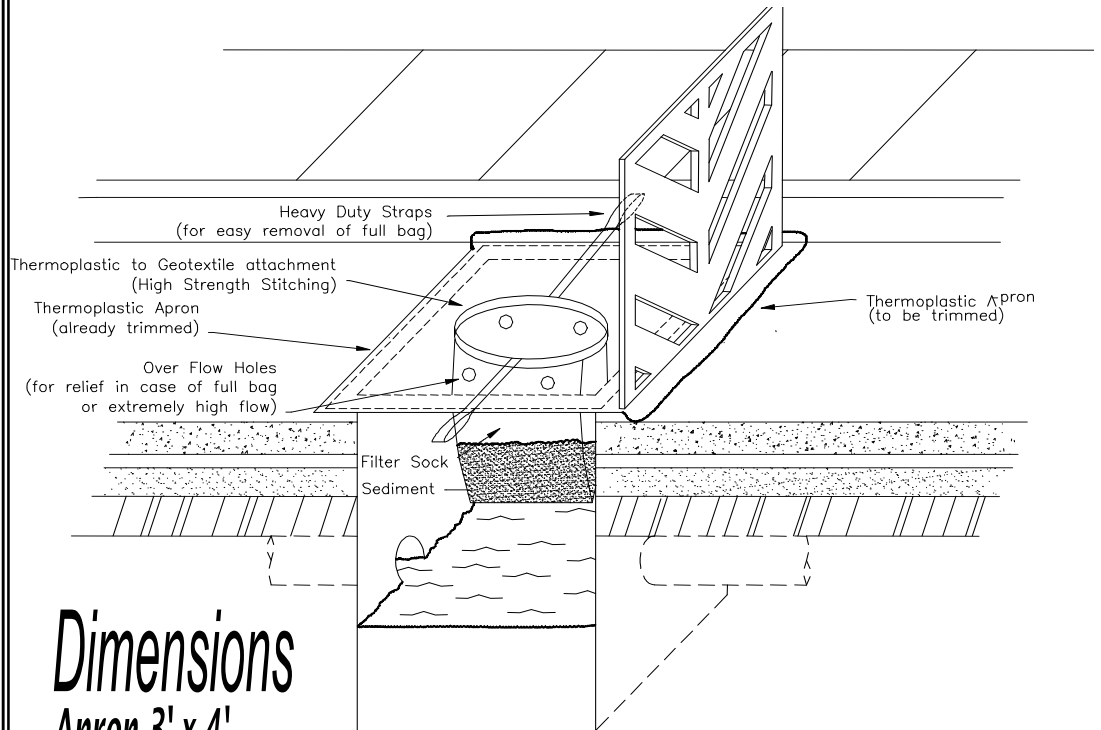


CATCH BASIN SEDIMENT TRAP

Catch Basin Sediment Traps protect our rivers and streams by capturing sediment and debris at storm water catch basins. This new design utilizes a water inlet and mounting apron that ensures maximum flow and allows for a professional looking and virtually invisible installation. Our standard filter material is a non-woven geotextile with built-in overflow ports for cases of abnormally high water flow or over-filled filter bags.

Installation Instructions

1. Unfold the Catch Basin Sediment Trap and locate the long straps on either side of the filter sock.
2. Remove grate and insert filter sock portion into catch basin. The apron will extend beyond the edges of the catch basin opening.
3. Extend the two straps underneath the apron until they reach beyond the apron and catch basin opening (see drawing).
4. Adjust the straps so only the short looped portion extends beyond the edge of the grate.
5. Install grate on top of the apron and straps.
6. Trim excess apron that extends beyond the installed grate using the grate edge as a trimming guide.
7. **Be careful not to cut off the straps while trimming apron**



Dimensions

Apron 3' x 4'

Filter Sock 16" dia. x 24" long

Removal Instructions

1. Before lifting the grate secure the CBST by standing on, or placing a bar through, the looped end of one of the straps.
2. Remove grate and lift out the CBST using both of the straps.
3. Dispose of the CBST according to local regulations and replace with a new CBST.

Filter Material Specifications

Mullen Burst	ASTM D 3786	400 PSI
Grab Tensile Strength	ASTM D 4632	200 LBS
Puncture Strength	ASTM D 4833	130 LBS
Trap Tear	ASTM D 4533	85 LBS
Water Flow Rate	ASTM D 4491	90 GPM/ft²
AOS	ASTM D 4751	80 US sieve (.18 mm)